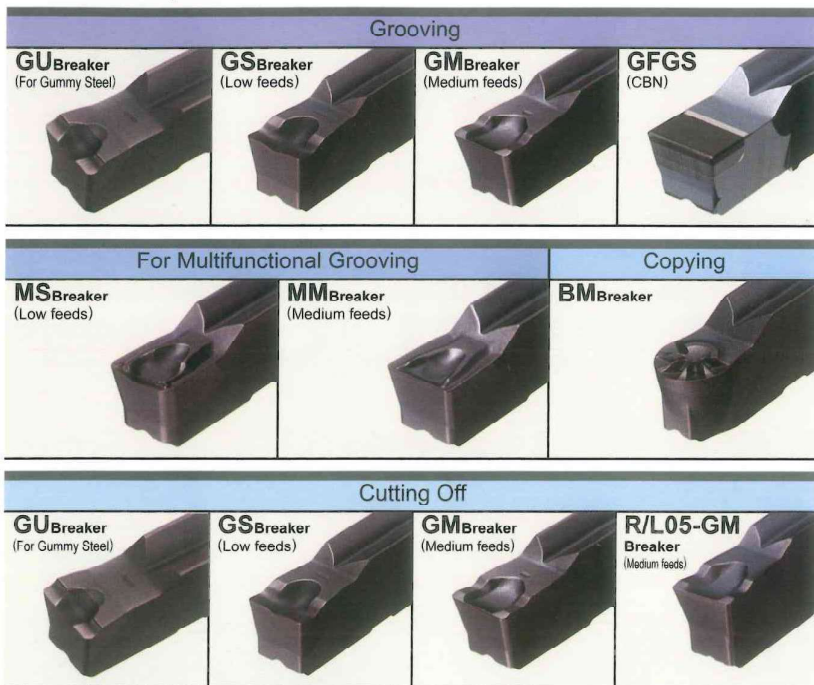


● A WIDE SELECTION OF INSERTS

● Breaker system



● Selection of groove widths



● Different corner radii available



● Blank inserts for additional grinding



*Blank inserts to be ground by customers.

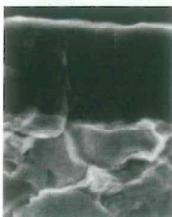
● INSERT GRADE

Work Material Machining Condition	P Steel	M Stainless Steel	K Cast Iron	S Heat-resistant Alloy, Titanium Alloy	H Hardened Steel
	Stable Machining Condition Unstable	NX2525 MY5015 VP10RT VP20RT	VP10RT VP20RT	MY5015 VP10RT VP20RT	VP10RT VP20RT

Note1) VP20RT is the first recommended grade for materials other than hardened steel.

Note2) For VP10RT, VP20RT and MY5015, wet cutting is recommended.

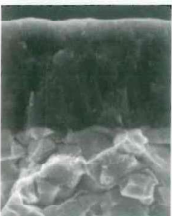
VP20RT (1st Recommendation)



- MIRACLE coated VP20RT for general turning operations. The combination of the tough special cemented carbide substrate and MIRACLE coating bring a good balance of wear resistance and fracture toughness at a high level. Corresponding to various work piece materials and diverse applications.

MIRACLE Coating
Carbide substrate (HRA90.5)

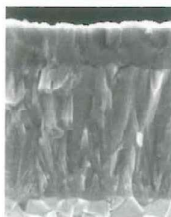
VP10RT (2nd Recommendation)



- MIRACLE coated VP10RT has high wear resistance. It adopts the special cemented carbide substrate that is harder than VP20RT. Use for hard-to-cut materials or to extend tool life.

MIRACLE Coating
Carbide substrate (HRA92.0)

MY5015



- CVD coated MY5015 with excellent wear resistance at higher cutting temperatures. It demonstrates longer tool life when machining cast iron and ductile cast iron. Also use for high speed cutting of steel under stable conditions such as continuous cutting.

CVD Coated Carbide
Carbide substrate

NX2525

- NX2525 is a cermet grade for finishing. Use for finish cutting of steel to obtain a glazed surface or low-cutting-speed applications that weld easily.

MB8025

- MB8025 is a sintered cubic-boron-nitride grade for hardened steel.

RT9010

- Uncoated carbide grade for the blank insert. Use this when you want to obtain long tool life with stability. Substrate is harder than RT9020. This is an uncoated carbide grade.

RT9020

- A tougher carbide substrate. This grade applies to wide range of applications.